

SURTRON TOUCH *HP*

ELECTROSURGICAL UNIT

*ONE TOUCH,
MANY SURGERIES.*





100% *MADE IN ITALY*

WE FOLLOW THE PRODUCTION PROCESS, FROM INITIAL CONCEPT TO THE FINAL PRODUCT, ENTIRELY IN OUR FACTORY.

LED SpA is a company that specialises in design and manufacture of medical equipments.

LED brand achieved wide prestige in the electrosurgery field worldwide. The company grew by using innovative manufacturing methods and by investing in research and development of new technologies.

The design and the production effected inside its own factory guarantee an elevated quality and safety of the products.

LED SpA's mission is to continuously research and develop new electrosurgical products, in the aim to improve the quality of the surgeons work.

LED[®] ELECTROSURGERY



SURTRON® TOUCH HP,
*the new generation of
 the electrosurgery.*

Performance, usability, design and reliability: these are the strengths of the new **SURTRON TOUCH HP**. A radiofrequency generator suitable for microsurgery and precise surgery in monopolar and bipolar modality.

The initial setup of **SURTRON TOUCH HP** and the adjustment of settings during a surgery are easily selectable through the large touchscreen.

The simplicity of the **SURTRON TOUCH HP** allows you to use it without any learning time, resulting in time savings.

PERFORMANCE
 USABILITY
 DESIGN
 RELIABILITY





WHAT'S NEW

Two surgeons can work simultaneously and integrated Argon unit.

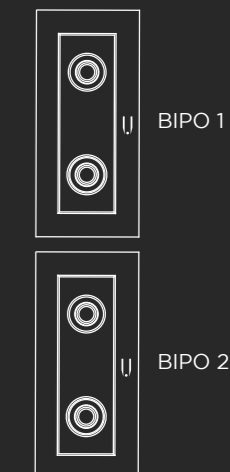
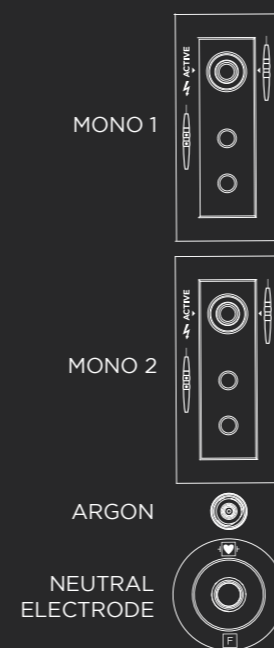
Over 35 years of experience in electrosurgery field and the continuous technical research have led to the design of **SURTRON TOUCH HP**. A new generation of technologically and functional features

- _ Simultaneous activation of Monopolar and Bipolar
- _ Contemporary dual monopolar
- _ Contemporary dual bipolar
- _ Integrated ARGON unit
- _ Power control depending on impedance
- _ Activating power with pedal and / or handpiece
- _ Neutral-patient electrode contact control
- _ Cutting function under saline solution TUR
- _ Modular cut in wet conditions BLEND
- _ VESSEL SEALING to clamp vessels up to 7 mm
- _ Possibility of use for minimally invasive surgery
- _ Monopolar / Bipolar functions
- _ Autostart / Autostop in Bipolar modality
- _ Adjusting the intensity of the sound

MONOPOLAR

NEW LAYOUT

BIPOLAR



25% LIGHTER

SURTRON TOUCH HP has a total weight of 13.5 kgs, 25% less than the previous generation.

An intuitive and logic work environment

SURTRON TOUCH HP has a particularly basic and intuitive work environment.

Horizontal matching between monitors, RGB light indications and connectors provides a clear and easy-to-read overview.

The accessories sockets are laterally placed, allowing you to control important information without disturbances such as connectors and attached accessories cables.

The large 9" touchscreen gives rise to a sleek flat front design and ensures faster and more efficient cleaning in the operating room.



STATE OF THE ART DEVICE

SURTRON TOUCH HP has a 9" capacitive touchscreen display with an intuitive user interface.



SURTRON TOUCH HP enables highly professional surgery with ergonomic and safety solutions. The connection of the neutral electrode is continuously monitored, if a split neutral plate is used, the device will monitor the contact between the patient and the electrode. The possibility to switch the functions and to set the supply of the power from the handpiece allows the execution of interventions without distracting attention from the operating range.



CUT

COAG

MONOPOLAR

<i>pure</i>	<i>enhanced</i>	<i>blend</i>	<i>duo</i>	<i>tur</i>
400 W-300 Ω	250 W-300 Ω	250 W-300 Ω	200 W+200 W 300 Ω	300 W-300 Ω

BIPOLAR

<i>pure</i>	<i>tur</i>	<i>micro cut</i>
150 W-100 Ω	300 W-300 Ω	50 W-100 Ω

SURTRON TOUCH HP has several **monopolar** cutting modes. In addition to the standard *PURE* function, there is a cut for high impedance called *ENHANCED*. A modular cut to avoid escaping and having a better result in wet conditions called *BLEND*. The new *DUO* function,

particularly important, allows the use of a standard cut with two handpieces simultaneously.

In the **bipolar** section in addition to the *PURE* standard cut, the device offers cutting function without escaping under saline *TUR* solution.

MONOPOLAR

<i>argon</i>	<i>forced</i>	<i>soft</i>	<i>fulguration</i>	<i>spray</i>	<i>duo</i>
120 W-1000 Ω	150 W-150 Ω	150 W-150 Ω	100 W-500 Ω	120 W-1000 Ω	100 W+100 W 500 Ω

BIPOLAR

<i>bipolar</i>	<i>sealing</i>	<i>tur</i>	<i>micro coag</i>
150 W-50 Ω	250 W-50 Ω	250 W-50 Ω	50 W-50 Ω

Monopolar coagulation modality allows superficial coagulation called *FORCED* or deep coagulation called *SOFT*, generated by the low voltage emitted.

The *FULGURATION* and *SPRAY* functions allow a fast coagulation without contact thanks to the high voltage supplied. The

new *DUO* mode also allows a superficial coagulation with two handles at the same time. In the **bipolar** section, the standard *BIPOLAR* and *SEALING* function to clamp vessels in a fast and safe way up to 7 mm finish the wide range of functions of the **SURTRON TOUCH HP**.



Surgeon and device: they are one and the same thanks to **SURTRON TOUCH HP**. The software is divided into four sections corresponding to the four sockets on the sides. Each socket corresponds to bright LEDs indicating the yellow, blue clotting cutout. The light remains white while waiting for delivery.

*SIMPLE
FUNCTIONAL
INTUITIVE*

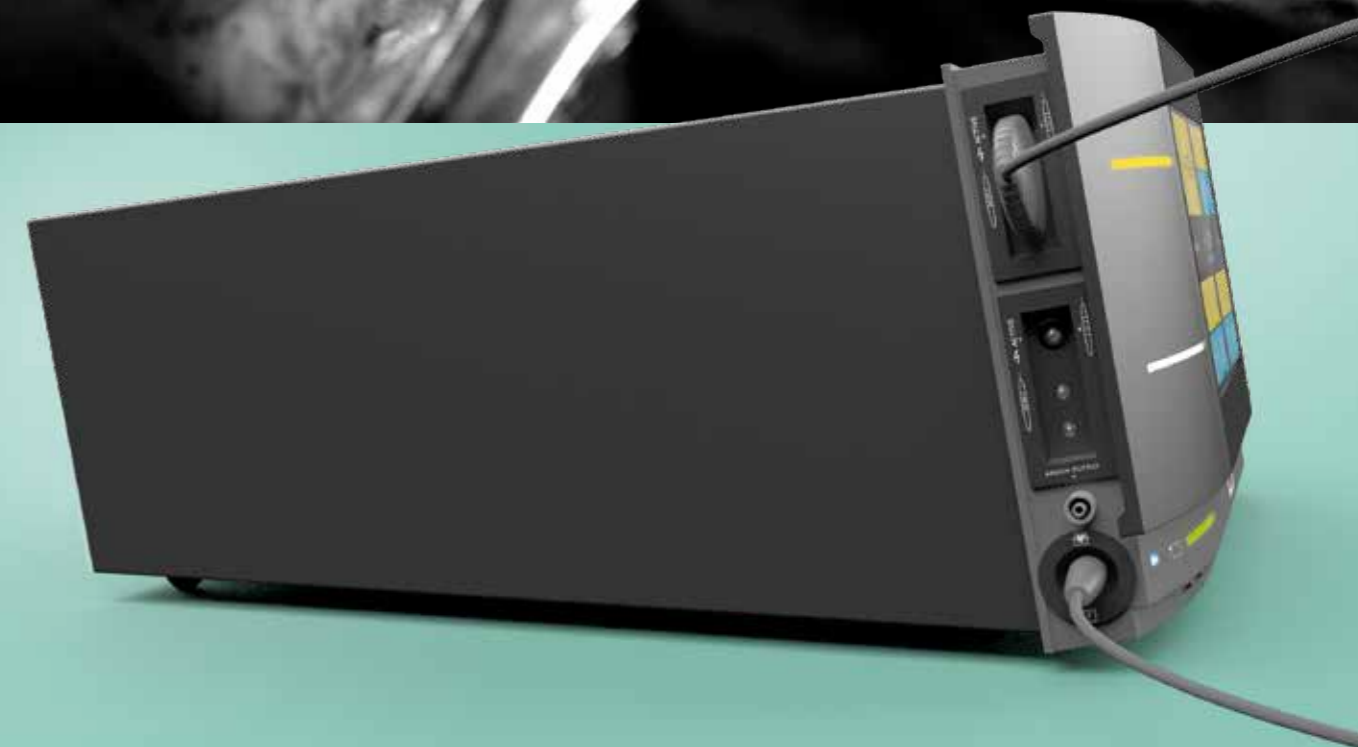
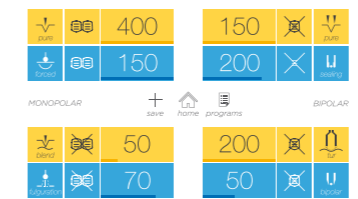
Simplicity, this is the goal we set for ourselves to achieve.

The simplified set up is designed to give priority to surgery, not to the search and the comprehension of functions.

*Simple
is nice!*

LeOS, Led electrocautery Operating System, has been developed to provide a simple, functional and intuitive work experience.

With one finger touch you can choose from a white or black screen how to customize and to save your work settings, change the power of the cut or coagulation and to manage each function of the device.



LED.IT

ELECTROSURGERY

LED SpA
via Selciatella, 40
04011 Aprilia (LT) Italy

M info@led.it
P +39 06 92870045
F +39 06 92870046

